

EWDD'S WEEKLY UPDATES



SUCCESS STORIES WEEK OF APRIL 18, 2022

**WE'RE
OPEN**

Small Business Rental Assistance Program

The City of Los Angeles will provide \$12 million in grants to eligible businesses located in the City that need financial assistance to aid in their recovery from COVID-19. Grants will be of up to \$15,000 or six months of back rent, whichever is less.



**\$12
MILLION IN
GRANTS**



To apply, visit: bit.ly/lasmallbizgrant

Applications will close May 6, 2022

APPLY TODAY! SMALL BUSINESS RENTAL ASSISTANCE GRANT

Applications are now open for the City of LA's \$12 million Small Business Rental Assistance Program. Grants will be of up to \$15,000 or six months of back rent, whichever is less. Applications are due May 6. The grant may be used for rent payments that are in arrears that were incurred on or after March 1, 2020. To be eligible, businesses must be for-profit and have a brick and mortar storefront location located and operated within Los Angeles city limits. Businesses must also provide lease agreements and proof confirming that back rent is owed. Ineligible businesses include non-profit organizations and home-based businesses. For more information and a full list of eligibility requirements, visit: bit.ly/lasmallbizgrant.

EWDD's BusinessSource Centers (BSC) are available to provide technical assistance to help small businesses prepare applications for City of Los Angeles COVID-19 financial relief grant programs. To reach your nearest BSC, visit: bit.ly/LABusinessSource.

EWDD YOUTHSOURCE CENTERS

EWDD currently operates 14 [YouthSource Centers \(YSCs\)](#) that provide young Angelenos ages 16-24, services including: mentoring and counseling, job skills training and career exploration. The YouthSource Centers are located in underserved neighborhoods throughout the City and offer services at no cost. This week, EWDD Updates highlights success stories from Para Los Niños (PLN), which operates the Northeast and Central LA YouthSource Centers.



BACK IN SCHOOL, MOVING INTO TECH CAREER

Fernando is 18 and enrolled in PLN's [YouthSource](#) program for support in obtaining his high school diploma. Fernando was born in El Salvador. In 2015, he came to the U.S. to seek a better life. As a new student in a new country, Fernando experienced a lot of bullying as he was learning English and adapting to his new surroundings. With time, Fernando joined different organizations around the city and volunteered at food drives in MacArthur Park and Skid Row. But during high school, Fernando said that he started hanging out with bad influences who steered him away from graduating.

Fast forward to now, Fernando is taking things seriously. He enrolled in the PLN YSC program where he is receiving case management, supportive services and academic support. His career advisor helped Fernando enroll at the East Los Angeles Skill Center, where he is working towards obtaining his high school diploma. Fernando is only six classes away from completing his secondary education and plans on applying to college once he finishes. In the meantime, Fernando also signed up for the Delete the Divide program at PLN, where he is working towards a certification in Google Project Management. In less than a month, Fernando has made significant progress and PLN is excited to see what else he achieves.



FROM INSTABILITY TO HEALTH CARE CAREER

Maggie is 21 years old. Her high school counselor first referred her to PLN [YouthSource](#) during a time when her family was involved with the Los Angeles County Department of Child and Family Services (DCFS). With guidance from the YouthSource Center, Maggie (pictured above) enrolled in a Hire LA's Youth

internship. She also received support from PLN's family services department to help her and her siblings through the tough time they were experiencing. After high school, Maggie remained connected with PLN. When she found herself struggling in community college, she reached out to PLN for support. Maggie has been financially responsible for herself since she graduated high school, often working up to three different part-time jobs to make ends meet.

Despite the challenges Maggie has faced with housing stability and difficult family dynamics, she has kept her focus on her educational goals. Maggie has extended her time in community college since she has been unable to attend full-time work for several semesters. The PLN YSC helped Maggie enroll in Mayor Eric Garcetti's Angeleno Corps Program, which provides hands-on work experience and educational support for young Angeles ages 18-24. Participants work part-time and earn \$1,000 per month, which has offered Maggie financial stability. She was able to leave one of her part-time jobs and focus more of her time on school. Through the Angeleno Corps Program, Maggie has gained experience in the healthcare field. She currently works at Clinica Romero, where she helps ensure individuals have access to COVID testing and vaccinations. In the future, Maggie hopes to become a physical therapist specializing in sports medicine.



FROM PROBATION TO HIGHER EDUCATION

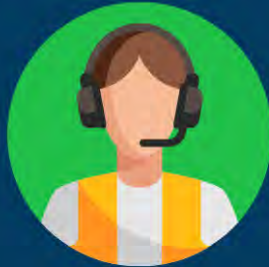
Stephanie joined PLN's YouthSource program because she wanted to change her life and find opportunities to help her grow. She was struggling in school and was involved in the justice system. The court assigned her to community services, and her probation officer referred her to PLN. Stephanie enrolled in the YSC's College and Career Readiness Program.

Before joining the YSC, Stephanie did not plan to complete her high school diploma. Now, she is interested in becoming a Spanish translator. Stephanie is

currently attending East Los Angeles College, where she is pursuing a degree in Administration of Justice and Spanish.

Stephanie has also received other services, including intensive case management, academic guidance, exposure to post-secondary education, professional attire for job interviews and transportation support. The YSC has connected Stephanie with several paid internships through Hire LA's Youth, where she learned skills that allowed her to secure a receptionist position at East Los Angeles College's Reading and Writing Center. Stephanie said she is so grateful for the opportunities provided by PLN and feels that the YSC has become a safe and welcoming space for her.

EWDD METRICS



WorkSource Centers assisted:

- 1,146** Walk-in visits
- 2,126** Phone calls and emails
- 244** Unemployment Insurance



YouthSource Centers - HIRE LA's Youth:

- 9,119** Applications
- 2,281** Youth in application pool
- 4,016** Youth enrolled



BusinessSource Centers assisted:

- 267** Microenterprises
- 40** Small Businesses
- 12** Sidewalk Vendors
- 86** Virtual Workshops



The Economic & Workforce Development Department is headquartered in the Garland Building located at 7th street and Garland Ave in downtown Los Angeles.

[1200 West 7th Street](#)
[Los Angeles CA 90017](#)

213-744-7300
711 for TRS (TTY)

If TTY/TTD is needed to contact us, please use 711 for Telecommunication Relay Services (TRS)

If you have any questions, comments, or wish to have a contribution considered for inclusion in an upcoming "Updates," please feel free to contact Jamie Francisco at (213) 744-9048 or Jamie.Francisco@lacity.org
